

POS DVR

TABLE OF CONTENTS

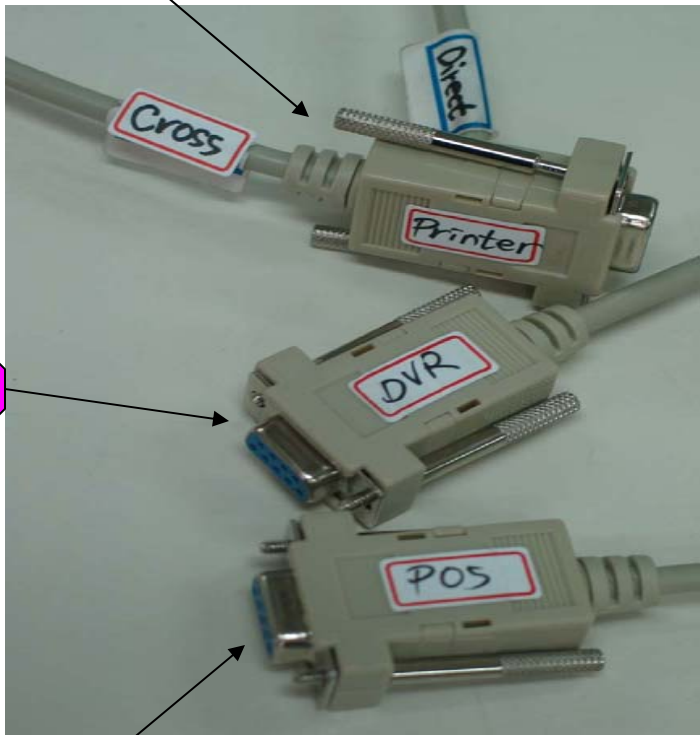
1. POS + DVR
 - 1-1. HARDWARE INSTALLATION
 - A. Parts
 - B. Installation
 - 1-2. SOFTWARE INSTALLATION
 - A. Installation & Setup
2. PC + DVR (FOR DEMO)
 - 2-1. HARDWARE INSTALLATION
 - A. Parts
 - B. Installation
 - 2-2. SOFTWARE INSTALLATION
 - A. DVR Setup
 - B. PC Setup

1. POS + DVR

1-1. HARDWARE INSTALLATION

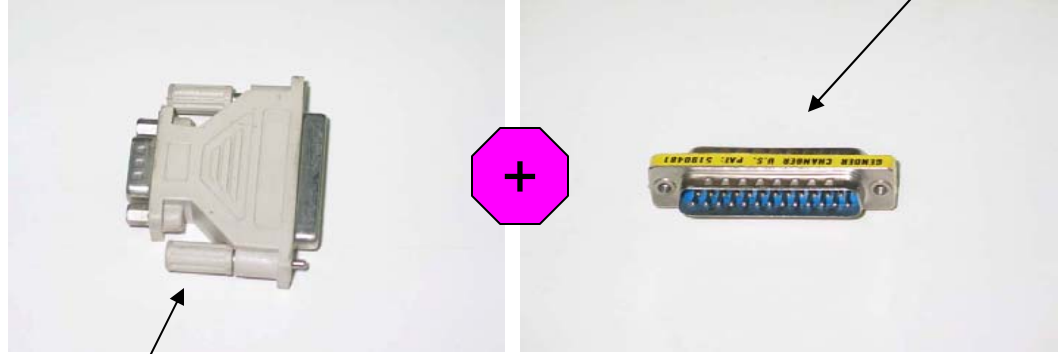
A. Parts

1



2

3



5

4



6



7

Part Names

- 1. RS232 Serial Cables (Cross & Direct)
- 2. RS232 Serial Cable
- 3. RS232 Serial Cable
- 4. RS232 Serial Converter (9 pins into 25 pins)
- 5. Gender Changer
- 6. #1 + #4 + #5
- 7. DVR
- 8. POS Printer
- 9. Point of Sales (POS)



8



9

손표를 사용하신 분은
신문증을 제시하여 주십시오

B. Installation

Part # 2 goes into the COM
Port 1 of Part # 7.



Part # 1 goes into the serial port
of Part # 8.



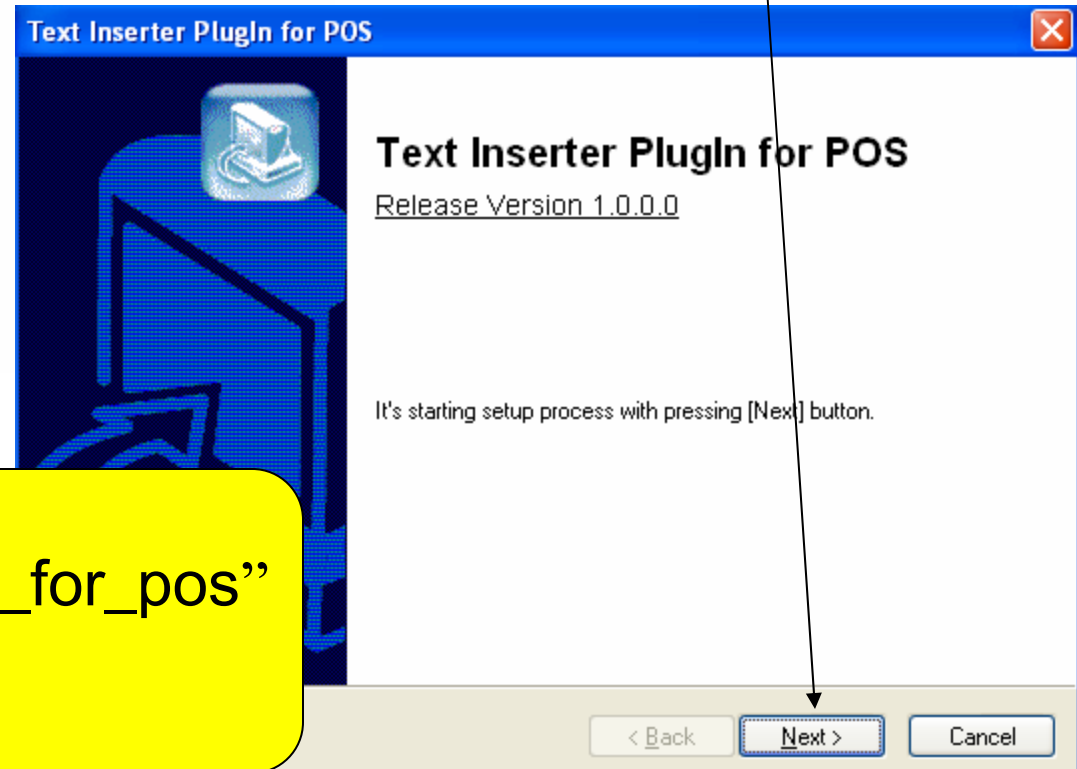
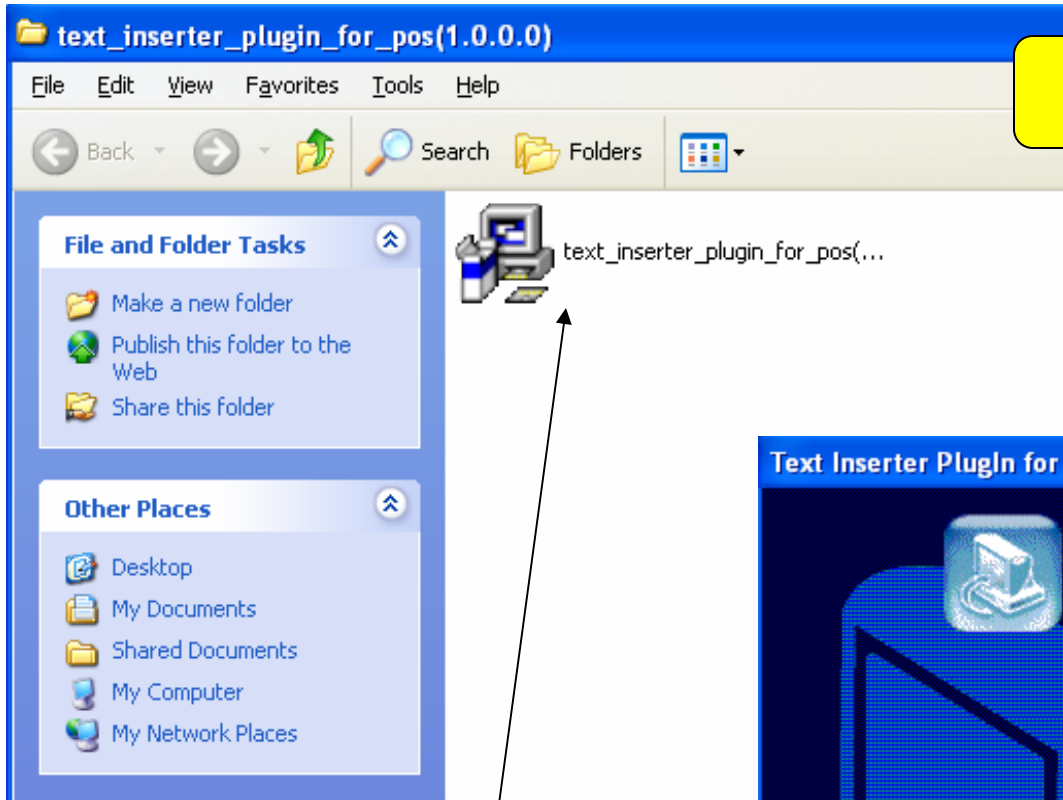
Part # 3 goes into the serial port
of Part # 9.



1-2. SOFTWARE INSTALLATION

A. Installation & Setup

Click “Next” to start.



Install “text_inserter_plugin_for_pos”
on DVR Server.

Select Installation method.

Typical Installation

It will be installed at C:\dvr.plugins\posti folder with predefined common way.

Custom Installation

With this option, you can select explicit software modules to install

Select "Typical Installation" for auto-installation.

Properties

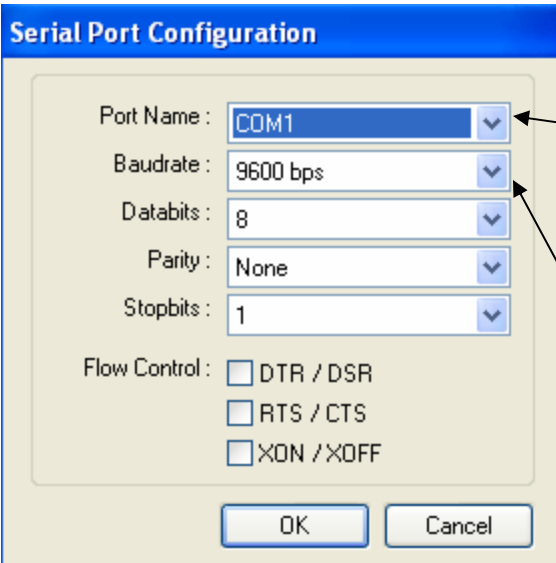
Device Connection | Text Filter | About...

Specify the serial port connected to each POS machine.

<input checked="" type="checkbox"/>	Channel 1 :	COM1	...	<input type="checkbox"/>	Channel 9 :	COM9	...
<input type="checkbox"/>	Channel 2 :	COM2	...	<input type="checkbox"/>	Channel 10 :	COM10	...
<input type="checkbox"/>	Channel 3 :	COM3	...	<input type="checkbox"/>	Channel 11 :	COM11	...
<input type="checkbox"/>	Channel 4 :	COM4	...	<input type="checkbox"/>	Channel 12 :	COM12	...
<input type="checkbox"/>	Channel 5 :	COM5	...	<input type="checkbox"/>	Channel 13 :	COM13	...
<input type="checkbox"/>	Channel 6 :	COM6	...	<input type="checkbox"/>	Channel 14 :	COM14	...
<input type="checkbox"/>	Channel 7 :	COM7	...	<input type="checkbox"/>	Channel 15 :	COM15	...
<input type="checkbox"/>	Channel 8 :	COM8	...	<input type="checkbox"/>	Channel 16 :	COM16	...

OK Cancel Apply

Select the camera channel and the click the button for serial port configuration.



Serial Port Configuration

Port Name : COM1

Baudrate : 9600 bps

Databits : 8

Parity : None

Stopbits : 1

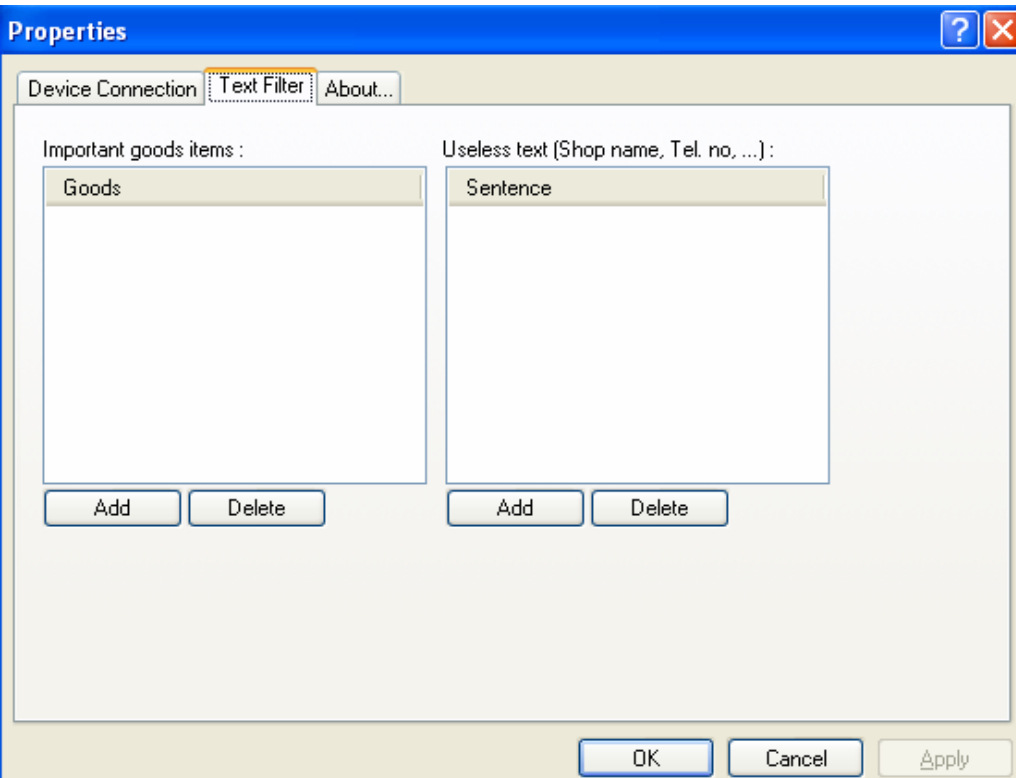
Flow Control : DTR / DSR
 RTS / CTS
 XON / XOFF

OK Cancel

Make sure to select “COM1” since the POS printer’s connected to com port 1.

The Baud rate value is normally 9600.

Leave everything else.



Properties

Device Connection | **Text Filter** | About...

Important goods items :

Goods

Add Delete

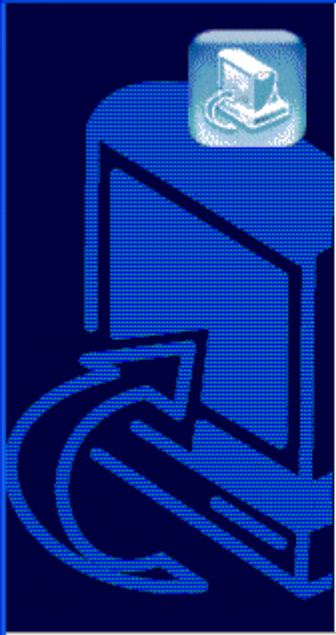
Useless text (Shop name, Tel. no, ...):

Sentence

Add Delete

OK Cancel Apply

Select words to be highlighted and words to be omitted.



Setup process has finished successfully.

Click "Finish" to complete.

< Back Finish

"External Text Inserter" in the DVR Setup allows you to choose different fonts, different corners and the number of lines for overlaid texts.

Setup

System Device Event Schedule Network User

System Information

Location : DVR System

Admin. Name :

Telephone no. :

System Power Control

Reserved Time : 16:54

Disable

Shutdown

Reboot

System Power Off When Shutdown

Auto-switching Interval

1 Sec 10 Sec 10 Sec

Misc.

E-Map... TV-OUT...

On-Screen Display

Show Camera Name and Status

Show Motion Detection Block

Font...

External Text Inserter

Font... Alignment...

Hard Disk Usage

Once Recycle

I-Phone

Use I-Phone Properties...

Version 3.4.0.0 (Built 2004.3.26)

Maintenance Log

2. PC + DVR

2-1. HARDWARE INSTALLATION

A. Parts

1



2



3. DVR



4. PC

B. Installation

Part # 2 goes into the COM
Port 1 of Part # 3.



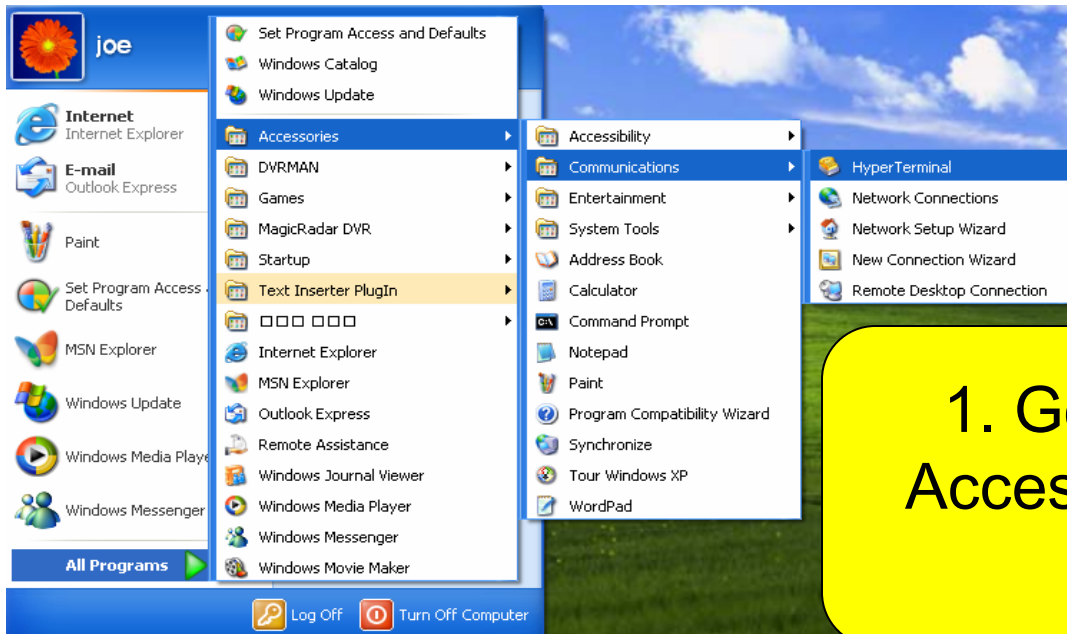
Part # 1 goes into the COM
Port 1 of Part # 4.



2-2. SOFTWARE INSTALLATION

A. DVR Setup: Refer to “Installation & Setup” (p5 – p8)

B. PC (POS Printer) Setup



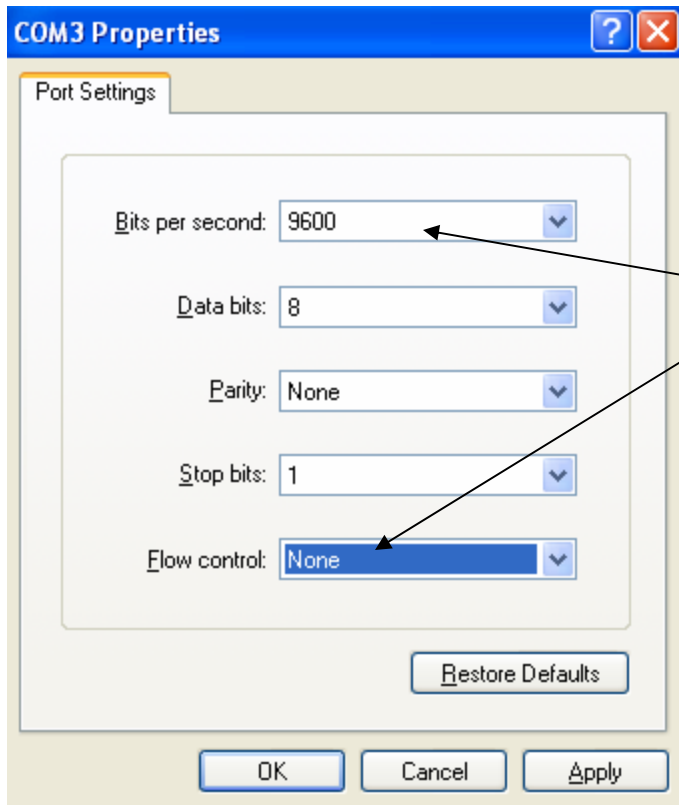
1. Go to Start/All Programs/
Accessories/Communications/
“Hyper Terminal”.



2. Enter any name and select any icon.

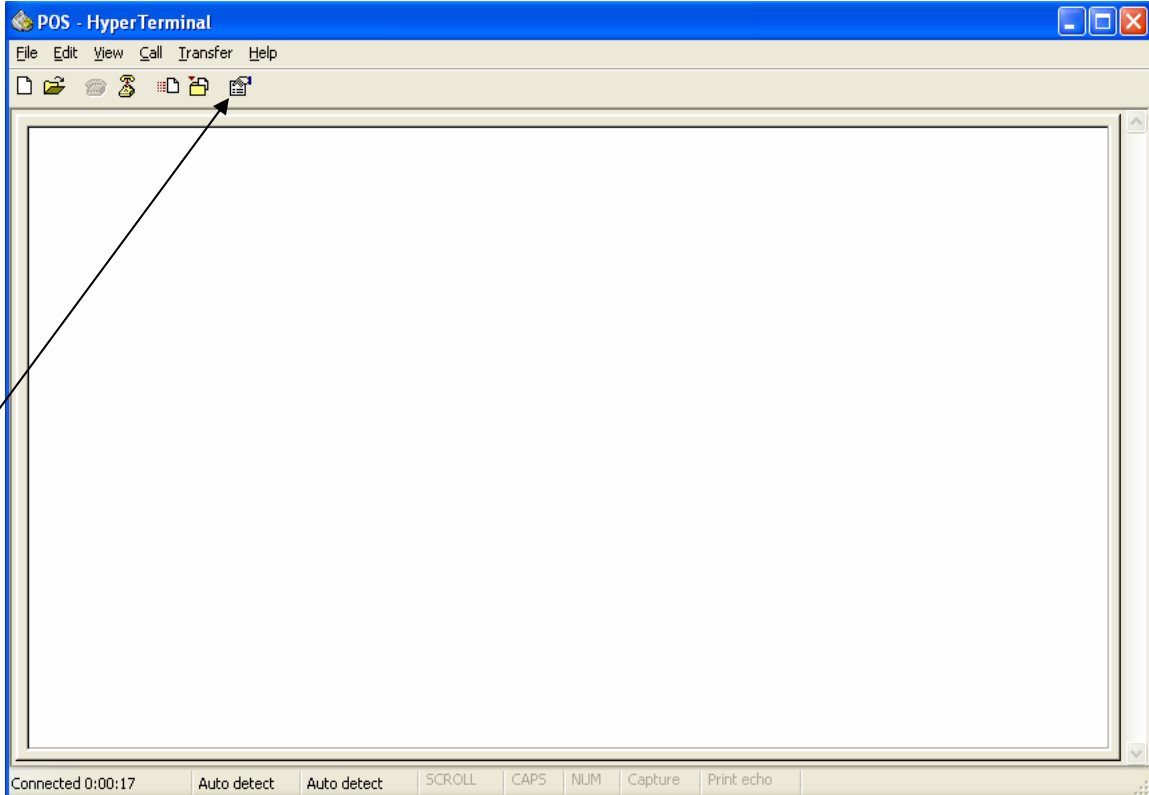


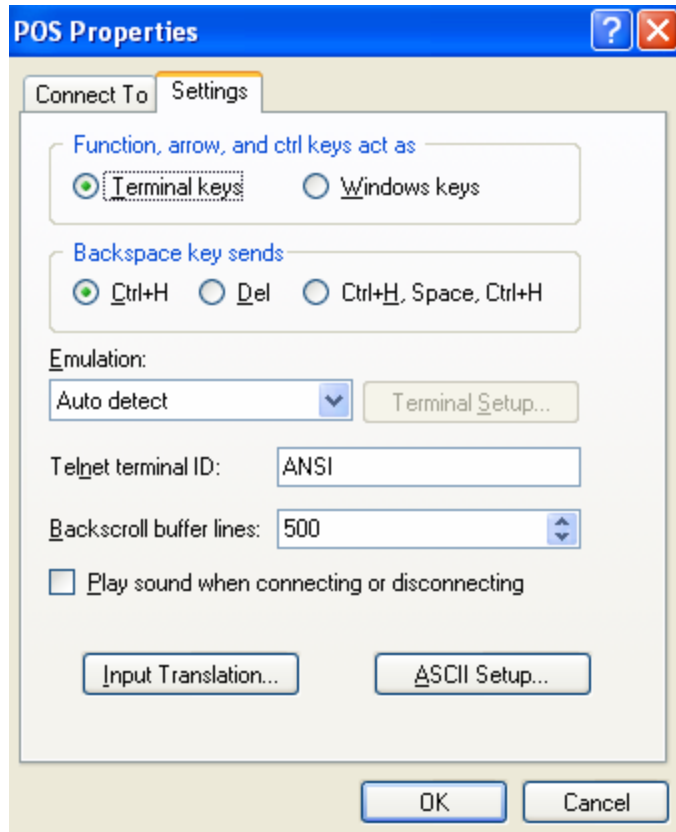
3. Make sure to select "COM1" since it's connected to com port 1.



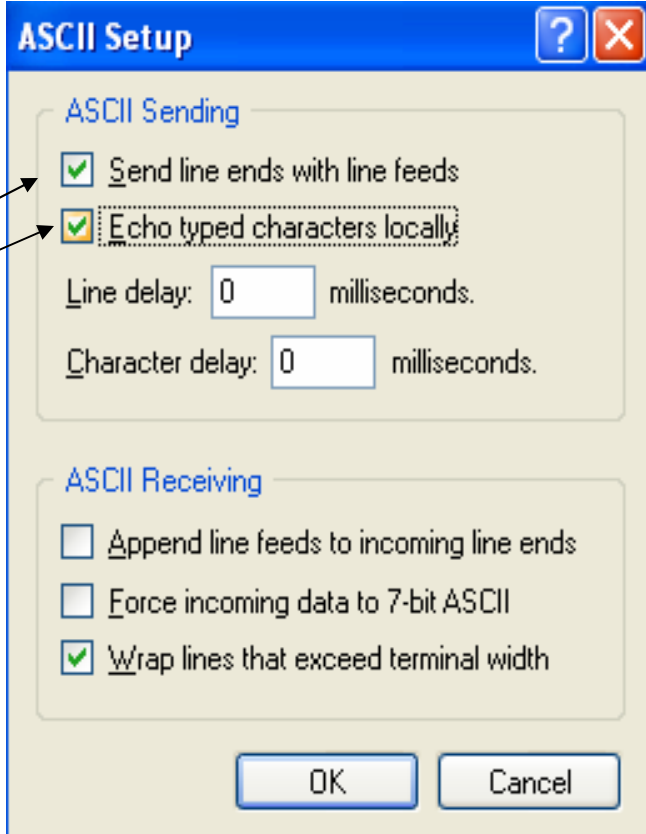
4. Set "Bits per second" to "9600" and select "None" for "Flow control".

5. Go to "Properties".

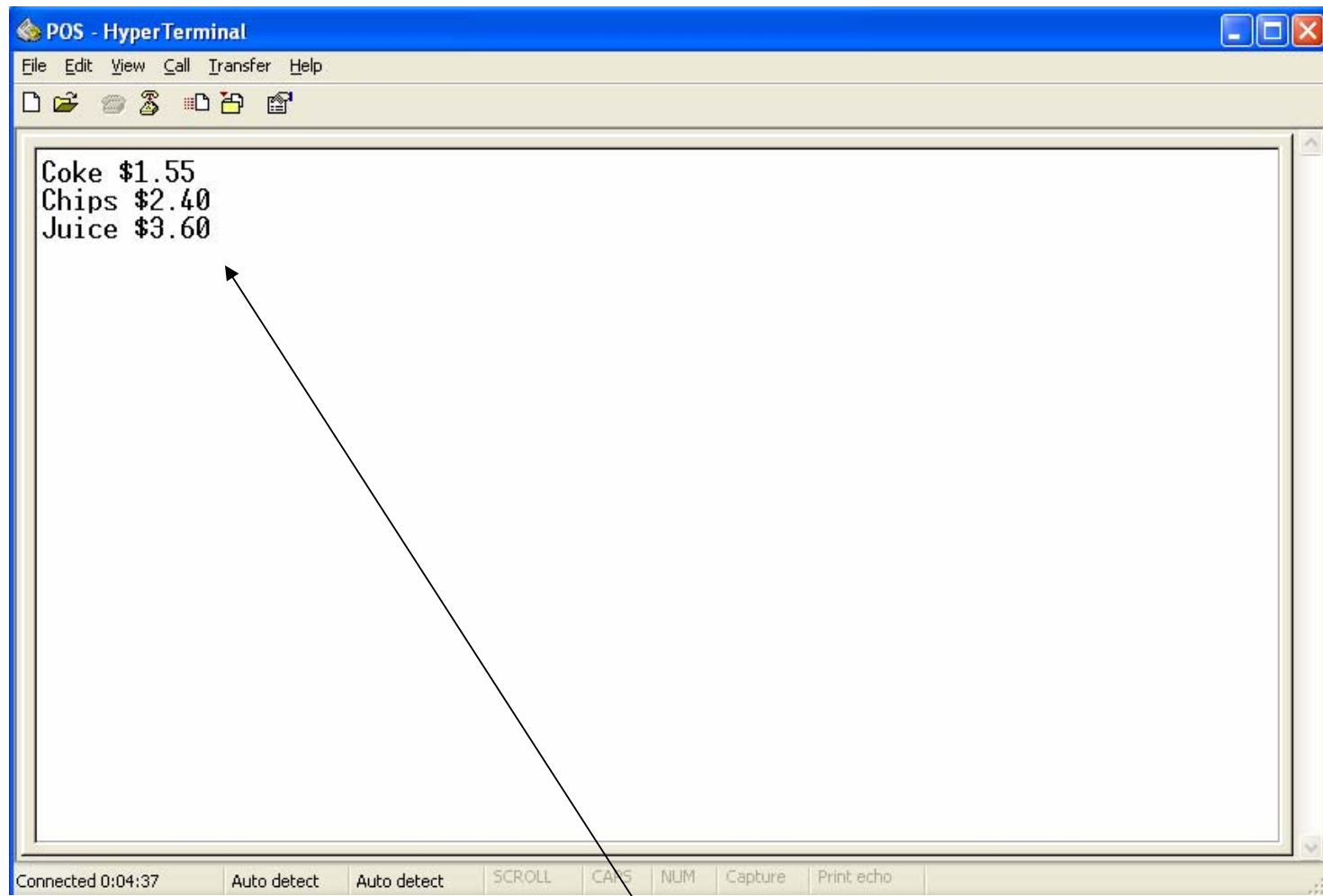




6. Go to “Settings”/
“ASCII Setup”.



7. Check both boxes.



8. Now you are all set for your demo.
Type an item and price, and press “Enter”.